



BC Transit,
2401 Burnside Road, View Royal BC
Complete Set of Permit Drawings



MORRISON HERSHFIELD

Suite 310, 4321 Still Creek Dr.
Burnaby, B.C. V5C 5S7
Tel: 604 454 0402 Fax: 604 454 0403
www.morrisonhershfield.com

NOTES:
DO NOT SCALE FROM DRAWINGS CONTRACTOR MUST VERIFY ALL DIMENSIONS ON SITE AND ADVISE CONSULTANTS OF ANY ERRORS OR OMISSIONS NO VARIATIONS OR MODIFICATIONS TO WORK SHOWN SHALL BE IMPLEMENTED WITHOUT WRITTEN APPROVAL ALL PREVIOUS ISSUES OF THIS DRAWING ARE SUPERSEDED BY THE LATEST REVISION ALL DRAWINGS AND SPECIFICATIONS REMAIN THE PROPERTY OF MORRISON HERSHFIELD.

D'AMBROSIO
architecture + urbanism



GOLDER
MEMBER OF WSP

All dimensions in Metric

REV	DATE	DESCRIPTION
0	2022-OCT-12	Issued for Construction

DISCLAIMER:
THIS DRAWING IS PROTECTED BY COPYRIGHT LAW AND SHOULD NOT BE REPRODUCED IN ANY MANNER OR FOR ANY PURPOSE EXCEPT BY WRITTEN PERMISSION OF MORRISON HERSHFIELD CONTRACTOR SHALL VERIFY AND BE RESPONSIBLE FOR ALL DIMENSIONS AND REPORT ANY ERRORS AND/OR OMISSIONS TO MORRISON HERSHFIELD.



THIS DOCUMENT HAS BEEN ELECTRONICALLY CERTIFIED WITH DIGITAL CERTIFICATE AND ENCRYPTION TECHNOLOGY AUTHORIZED BY THE AIBC. THE AUTHENTIC ORIGINAL IS AN ELECTRONIC FORM ANY PRINTED VERSION CAN BE HELD UPON AS A TRUE COPY OF THE ORIGINAL. WHEN SUPPLIED BY D'AMBROSIO architecture + urbanism. BEARING IMAGES OF THE PROFESSIONAL SEAL AND DIGITAL CERTIFICATE OR WHEN PRINTED FROM THE DIGITALLY CERTIFIED ELECTRONIC FILE.

CLIENT:

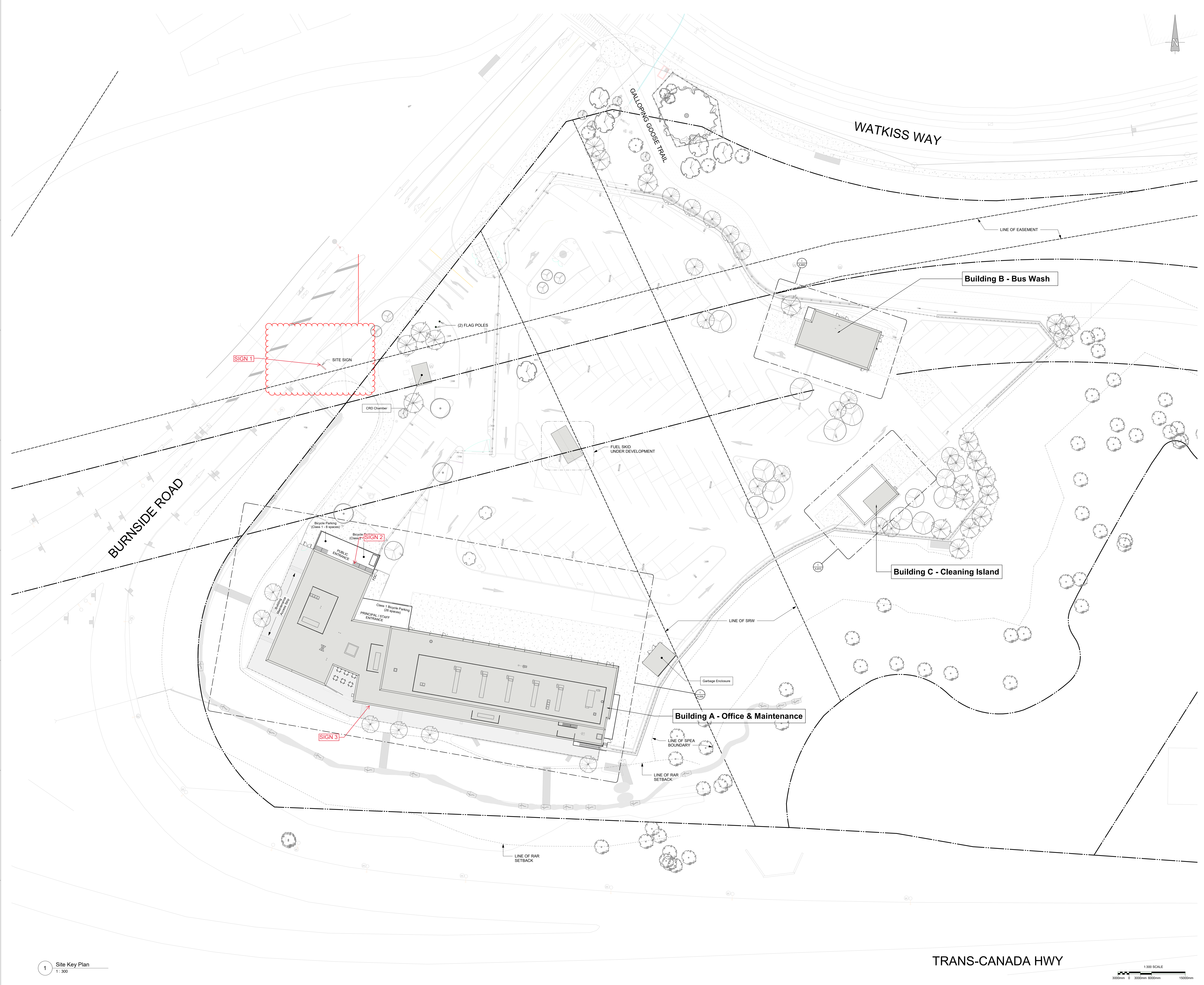


PROJECT:

Victoria handyDART Transit Centre

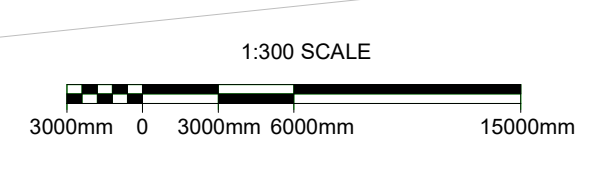
SITE KEY PLAN

DESIGN BY:	DATE:	SCALE:
DAU	2022-OCT-12	1:300
DRAWN BY:	PROJECT NO.:	
M.ZUBAN	20-05	
CHECKED BY:	DWG.#	REV
A.CERAJESKI		
APPROVED BY:		
E.SANGSTER		A-101



1 Site Key Plan
1:300

TRANS-CANADA HWY



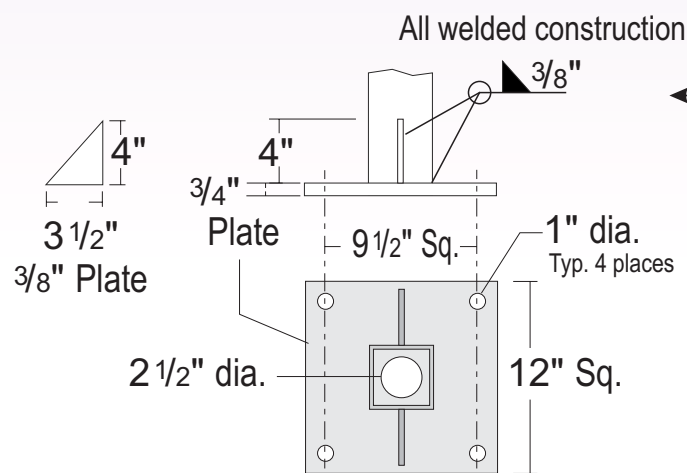
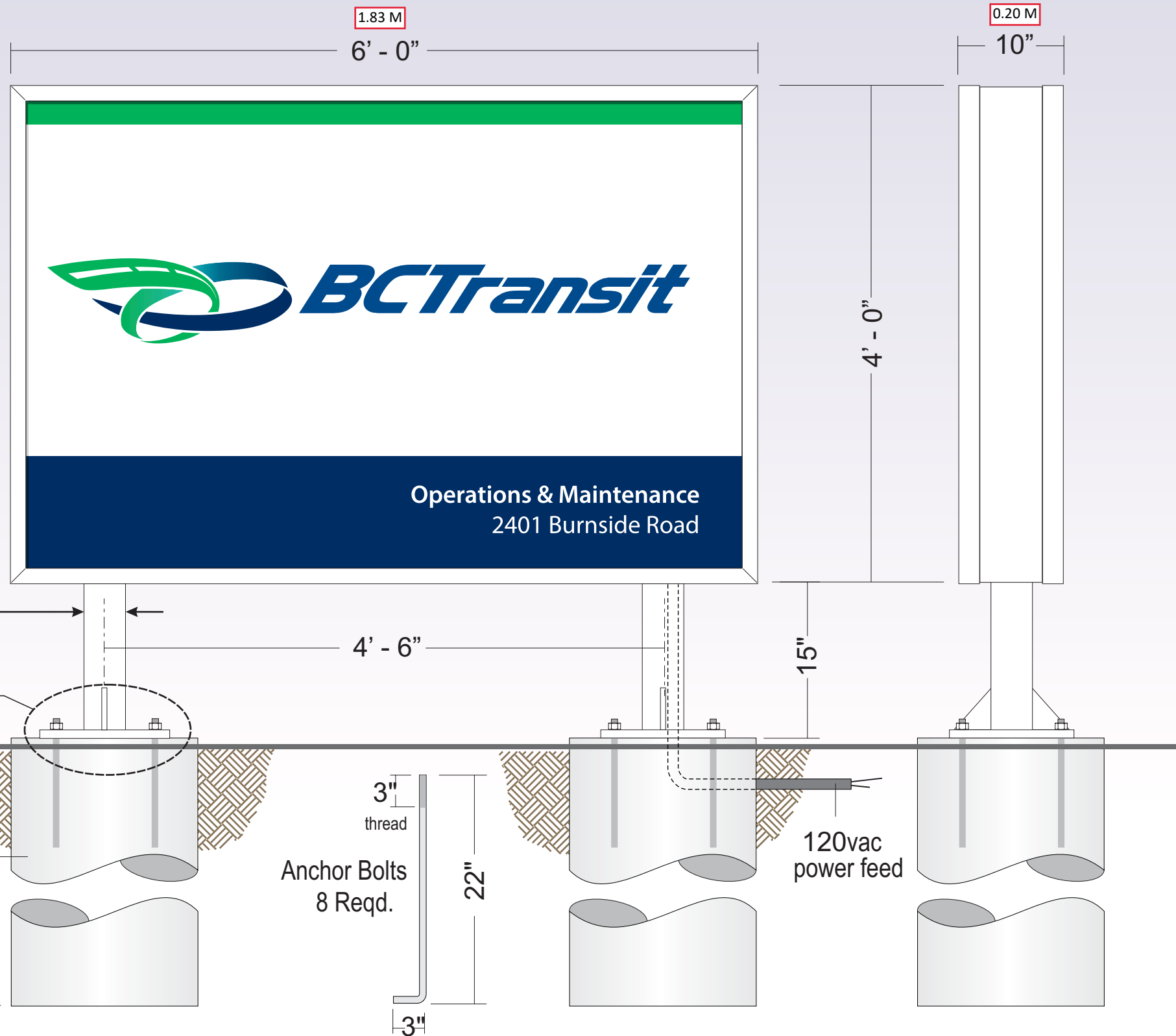
2022-10-07 8:53:03 AM

A

- ONE** - LED illuminated, double sided free standing monument sign.
 - 3/16" thick translucent white acrylic faces with translucent vinyl graphics.
 - EX-7 aluminum retainers.
 - EX-8 aluminum body
 - Two - 4" x 4" x 1/4" aluminum poles.
 - 3/4" thick aluminum base plates.
 - Finished cabinet, legs & base plates painted white with 2 part polyurethane
 - Sign anchored into concrete bases.
 - Concrete bases & electrical feed by others.
- All paint to be 2 part polyurethane.



- White
- PMS 362C
- PMS 295C



Two base plates required

THE DESIGN SHOWN IS PROPERTY OF LANDMARK SIGN LTD. & MAY NOT BE REPRODUCED IN WHOLE OR PART WITHOUT WRITTEN CONSENT FROM LANDMARK SIGN

Landmark Sign
SALES • SERVICE • LEASING

Head Office: 1250 Glenshire Dr Victoria BC V9C3W7 250-478-8610
Vancouver: Unit 400-6165 Hwy 17A Ladner BC V4K5B8 604-518-7578
Toll Free 1-866-478-8610 Fax 250-478-8631

Client Name:
BC Transit

Location:
2401 Burnside Rd. West, Victoria, B.C.

Start Date: June 13 / 2024

Last Revision: Sept. 12 / 2024

File name: BC Transit / Burnside Road / Monument R3 . cdr

Page: 1 of 2

Client Approval:

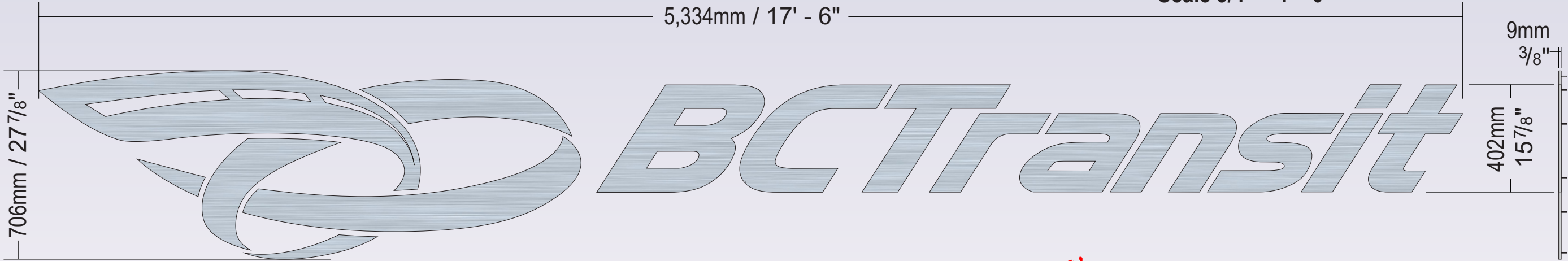
Landlord Approval:



Sales Rep:
Brooke Tomlin

Designer:
Weldon Kidson

Scale 3/4" = 1' - 0"

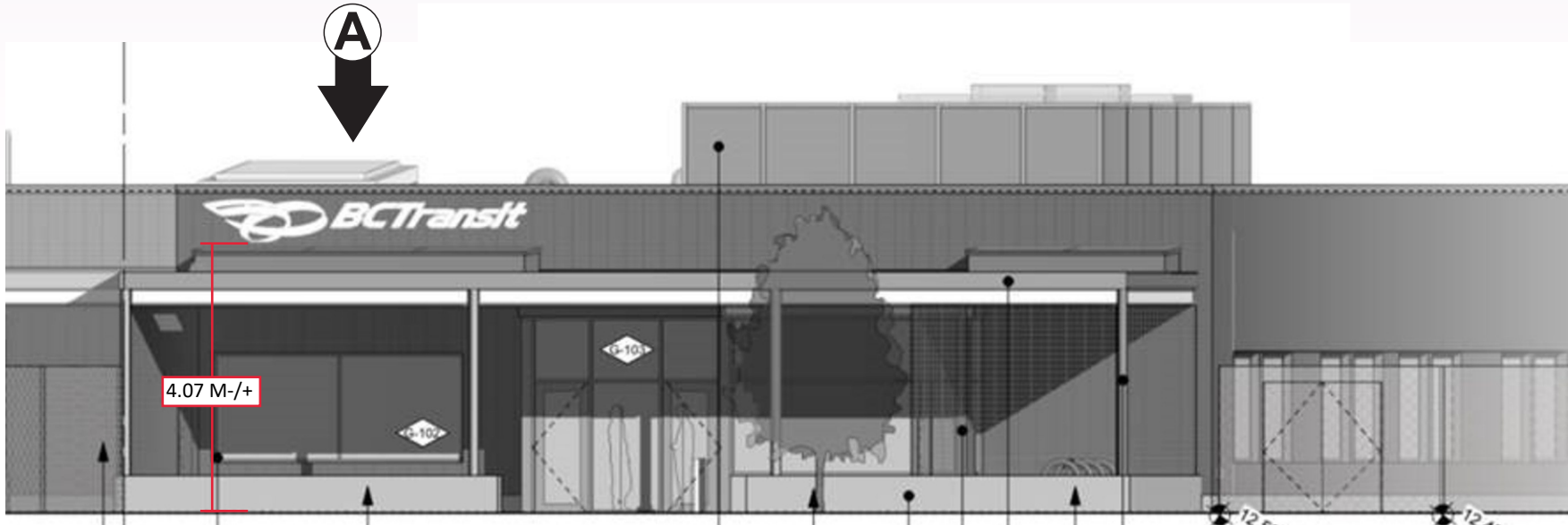


PRODUCTION

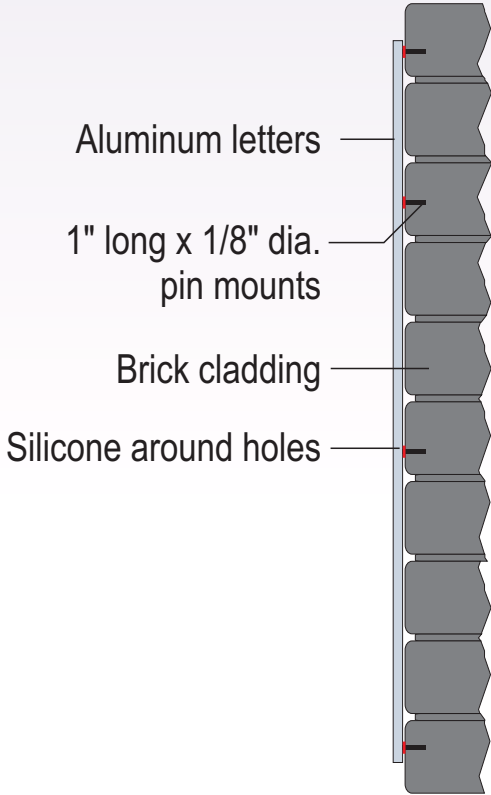
- A** **ONE** - Set of 3/8" thick, non-illuminated, aluminum letters & logo shapes.
 - Aluminum to have a horizontal brushed finish.
 - Pin mounted to the surface of an exterior wall. Secured with silicone.

Note from customer - *Exterior envelope for front elevation is brick veneer and back elevation is insulated metal panel & corrugated metal cladding.*

Front elevation



Brick Cladding



THE DESIGN SHOWN IS PROPERTY OF LANDMARK SIGN LTD. & MAY NOT BE REPRODUCED IN WHOLE OR PART WITHOUT WRITTEN CONSENT FROM LANDMARK SIGN

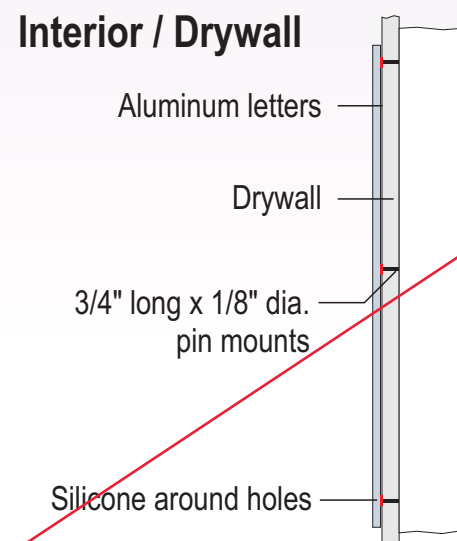


- B ONE** - Set of 1/4" thick, non-illuminated, aluminum letters & logo shapes.
- Aluminum to have a horizontal brushed finish.
 - Pin mounted flush to the surface of an interior wall.

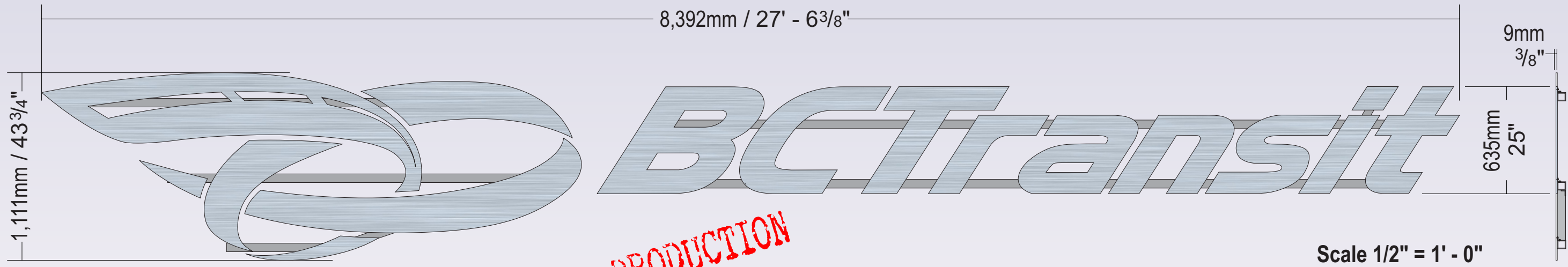
INTERIOR SIGN

PRODUCTION

Exact location for sign to be determined at time of install.



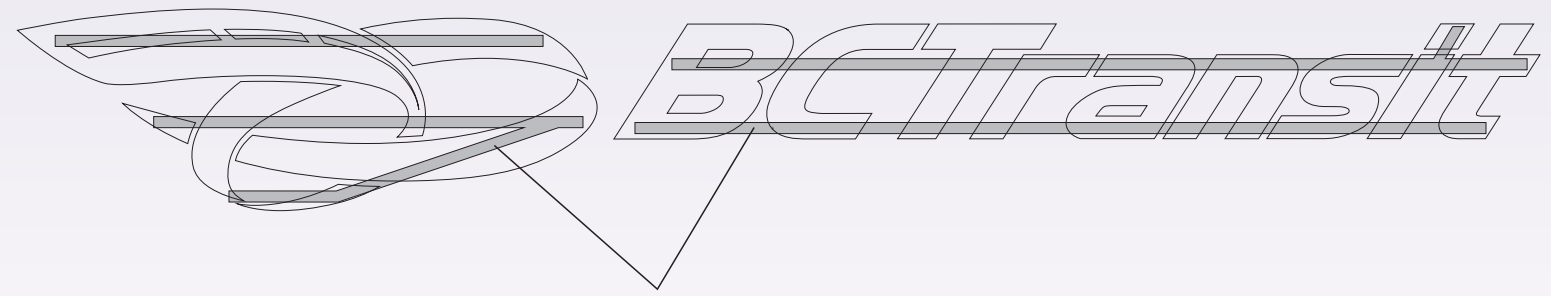
THE DESIGN SHOWN IS PROPERTY OF LANDMARK SIGN LTD. & MAY NOT BE REPRODUCED IN WHOLE OR PART WITHOUT WRITTEN CONSENT FROM LANDMARK SIGN



Scale 1/2" = 1' - 0"

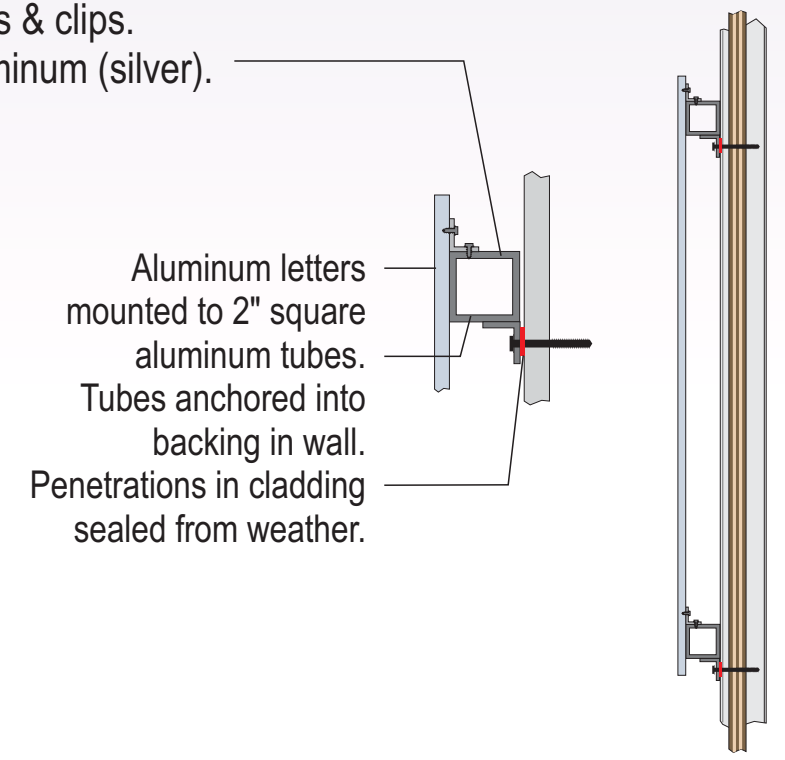
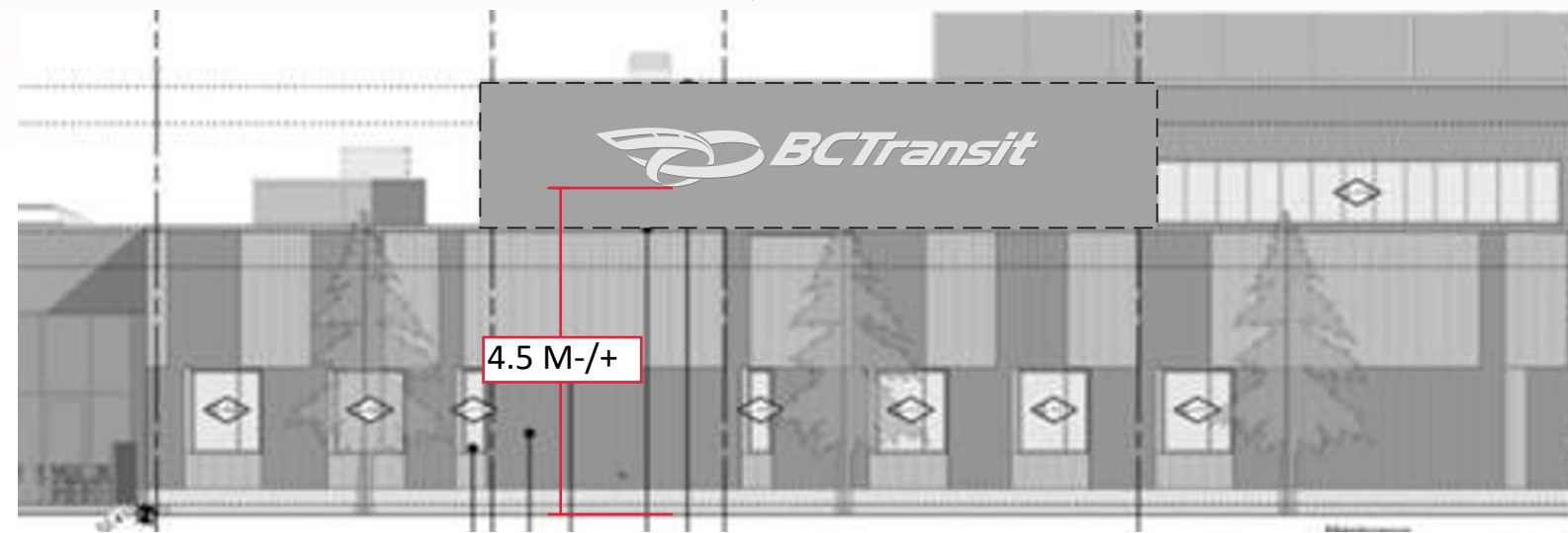
C Back elevation

- ONE** - Set of 3/8" thick, non-illuminated, aluminum letters & logo shapes.
- Aluminum to have a horizontal brushed finish.
- All letters & logo shapes mounted to 2" square tubes.
- Tubes & angle clips painted Brushed Aluminum (silver).
- Finished assembly mounted to a metal clad wall.



MP Mounting rails & clips.
Brushed Aluminum (silver).

C Back elevation
Shown centered equally on wall area. (dotted line)



THE DESIGN SHOWN IS PROPERTY OF LANDMARK SIGN LTD. & MAY NOT BE REPRODUCED IN WHOLE OR PART WITHOUT WRITTEN CONSENT FROM LANDMARK SIGN